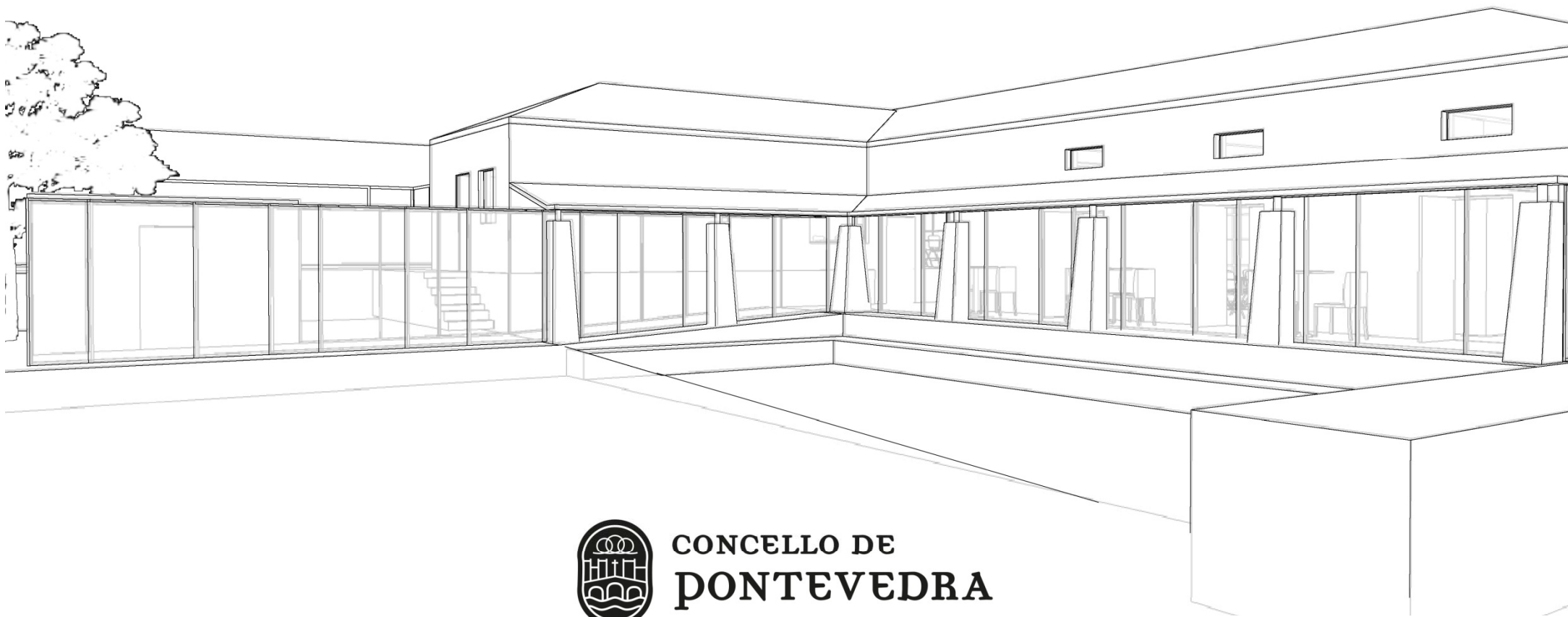


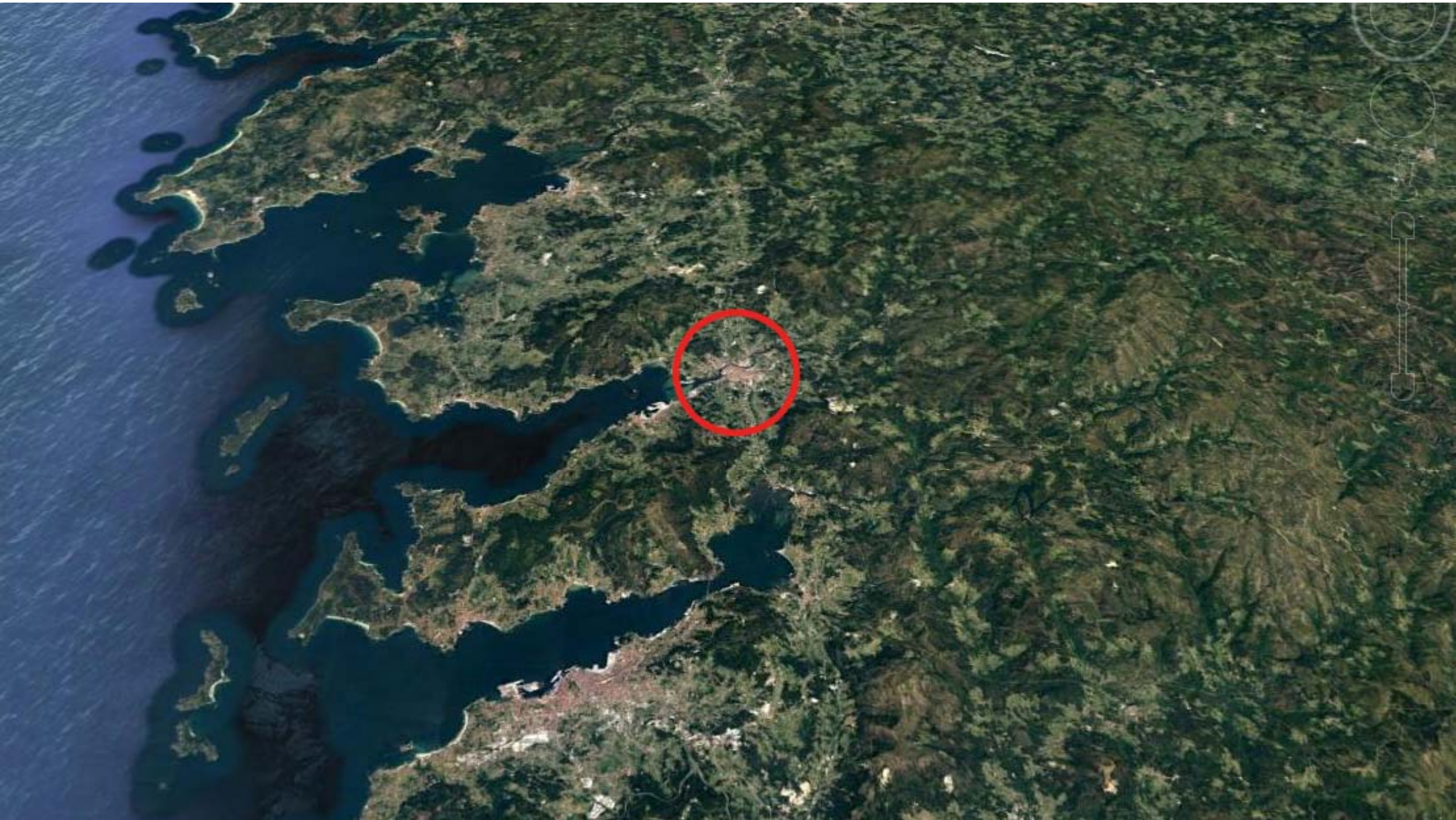
Centro Social Os Campos

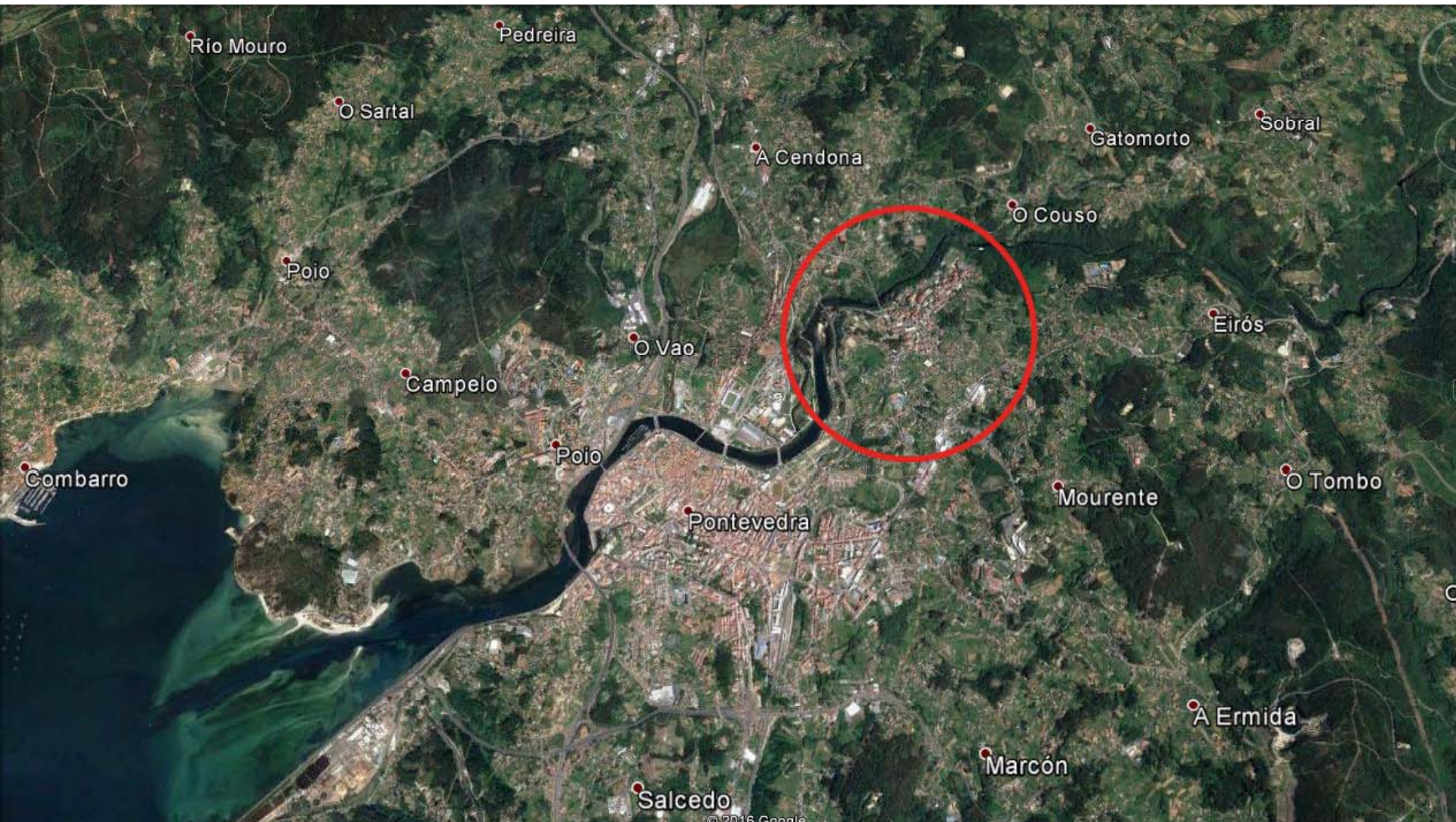


CONCELLO DE
PONTEVEDRA



MAURO LOMBA
ARQUITECTO





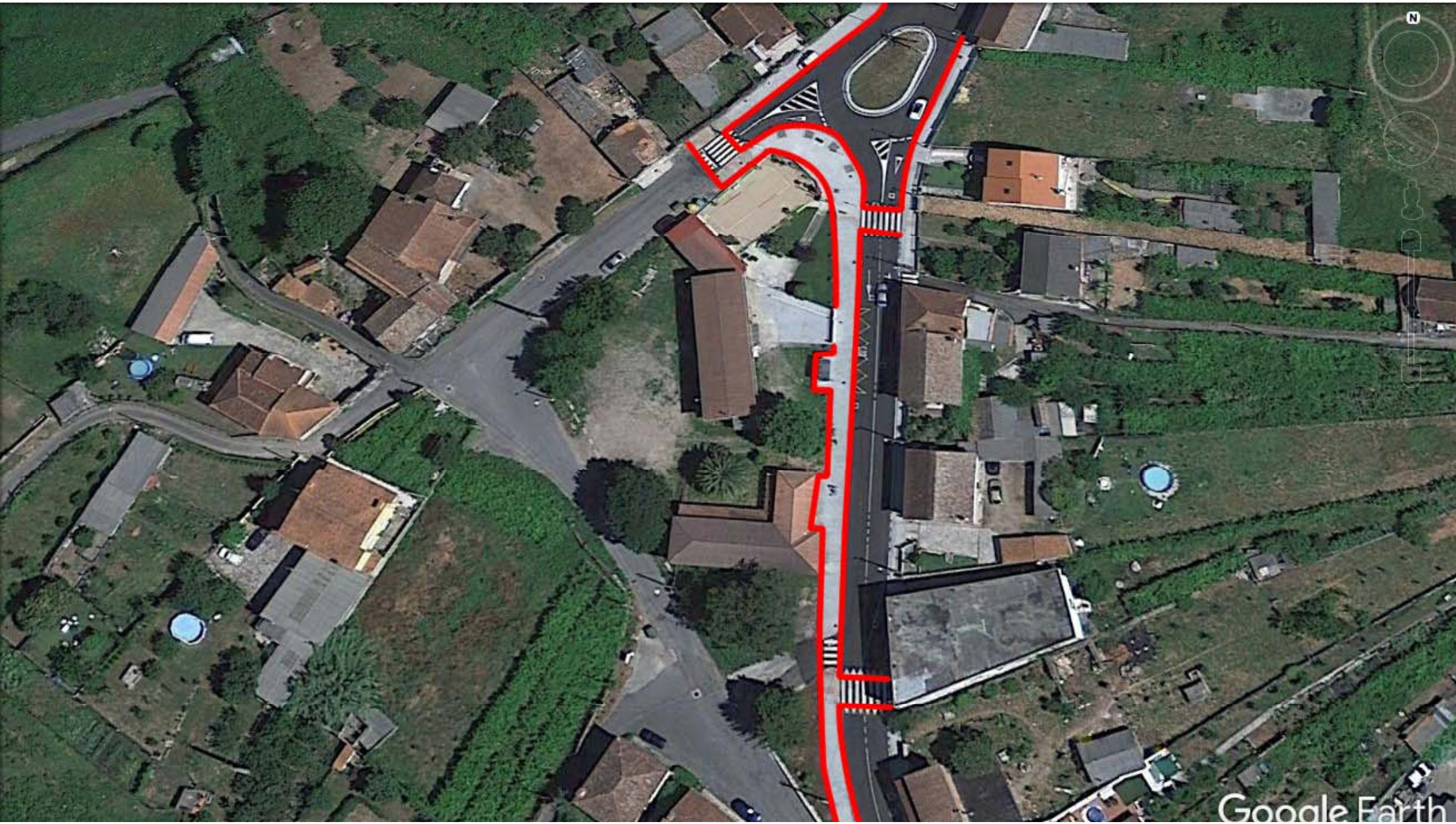




Google Earth

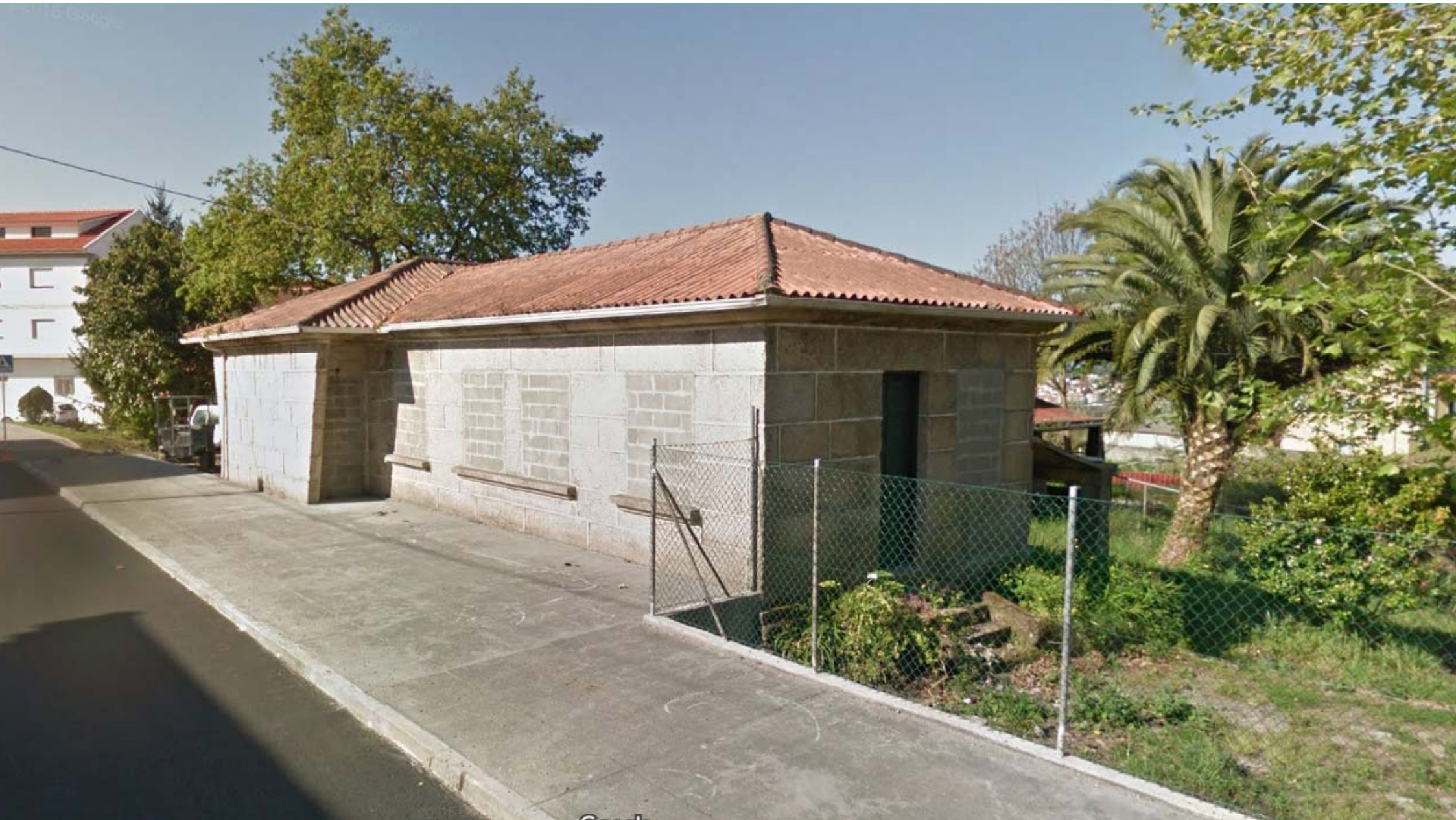


Google Earth



Google Earth

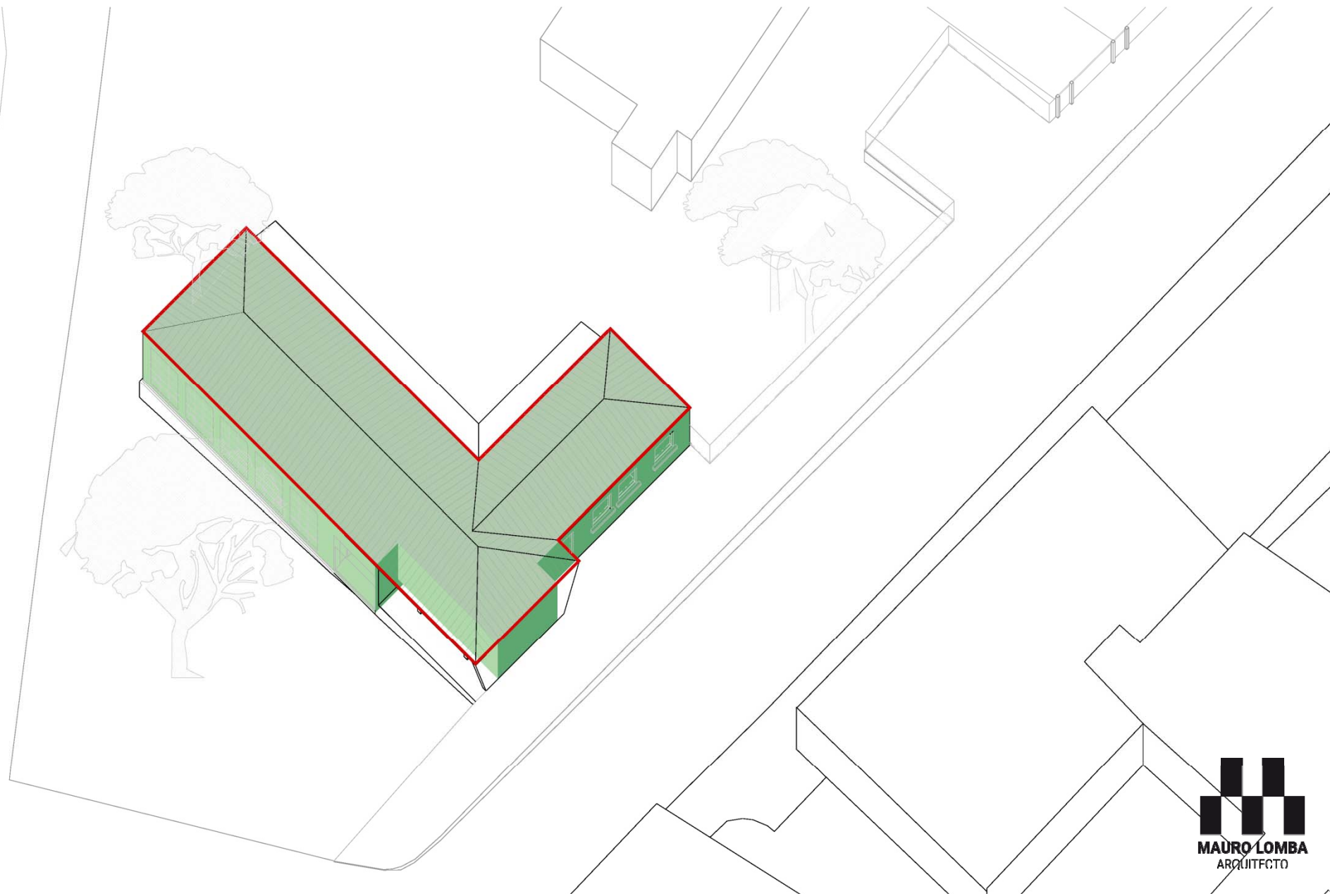






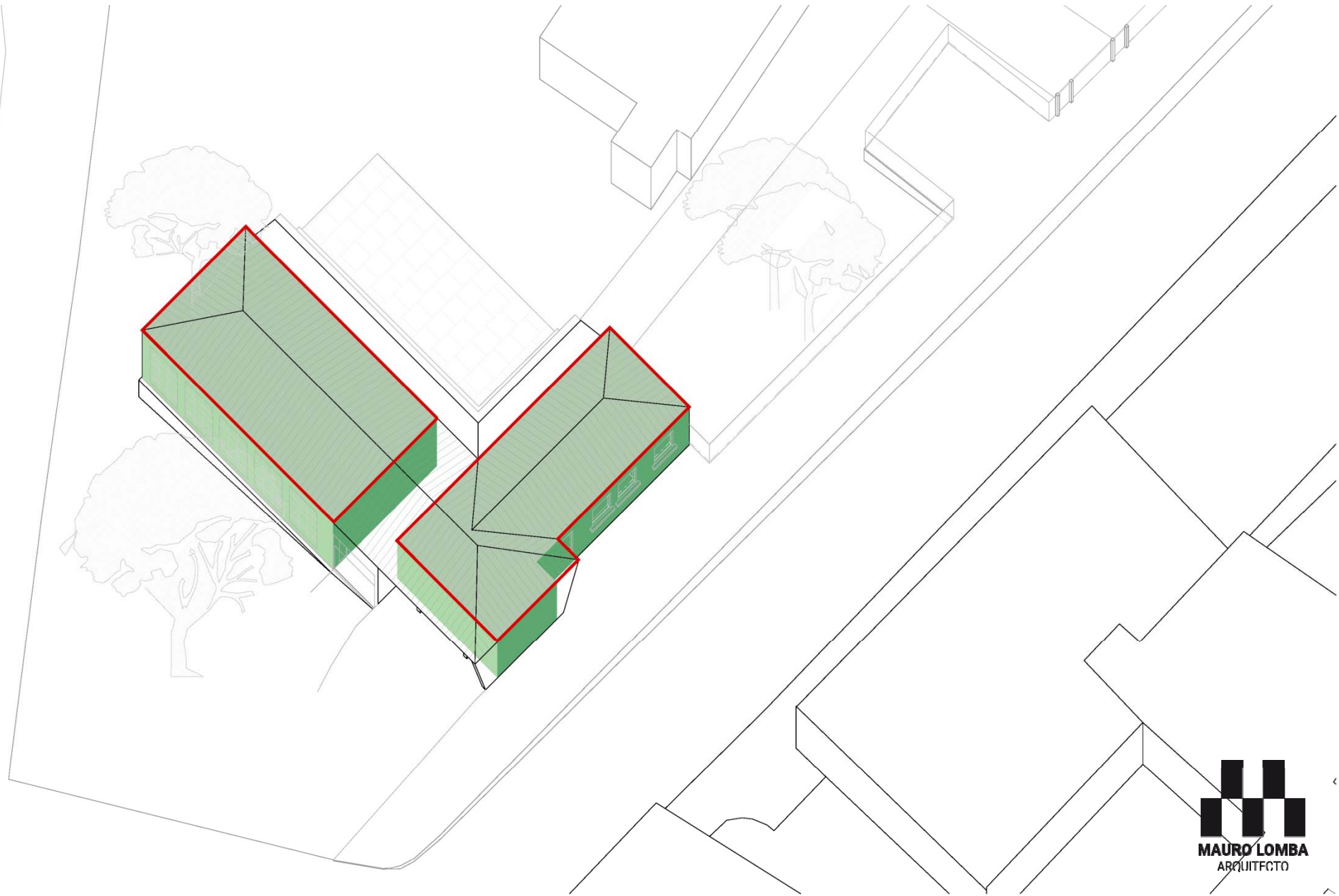






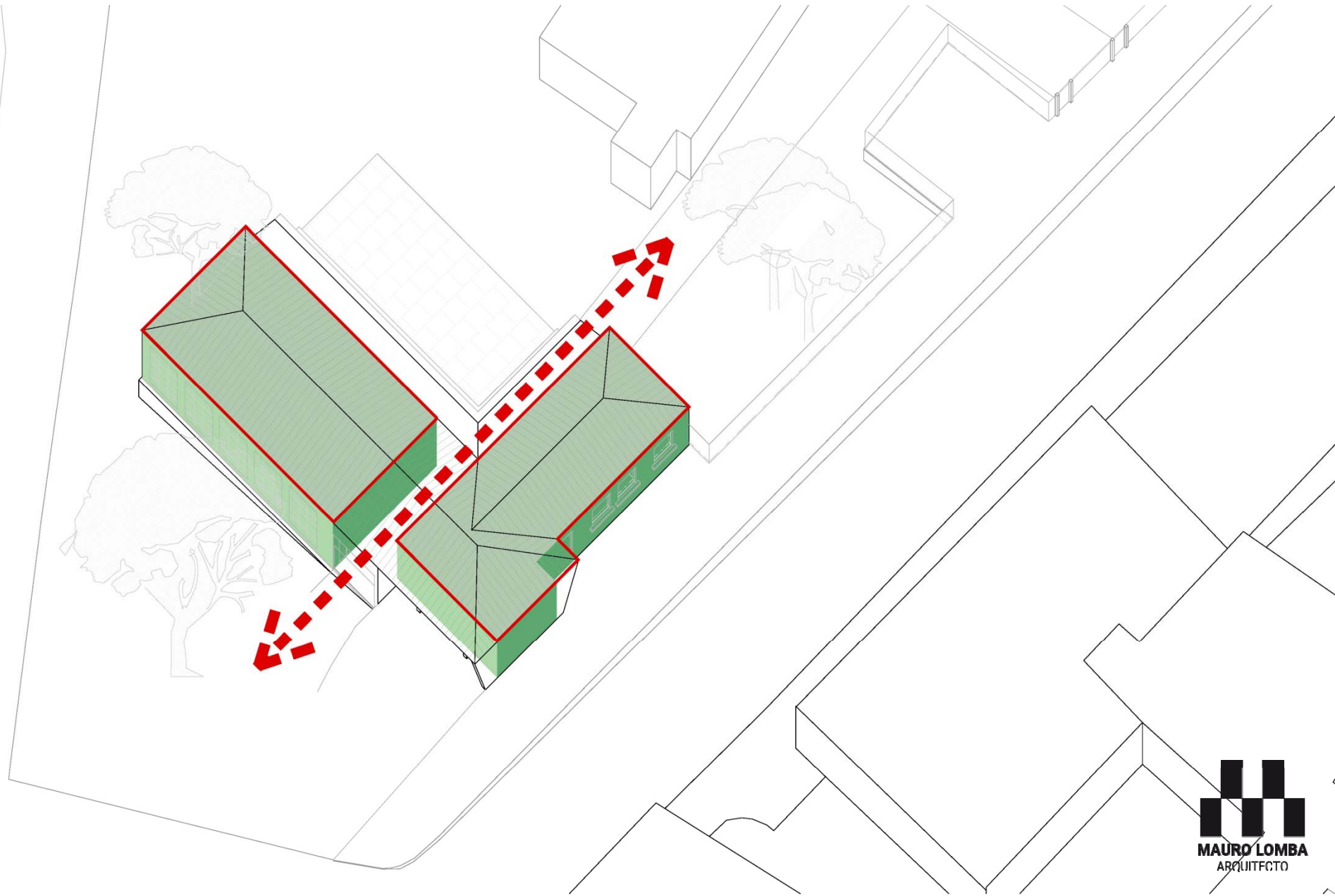
CONCELLO DE
PONTEVEDRA





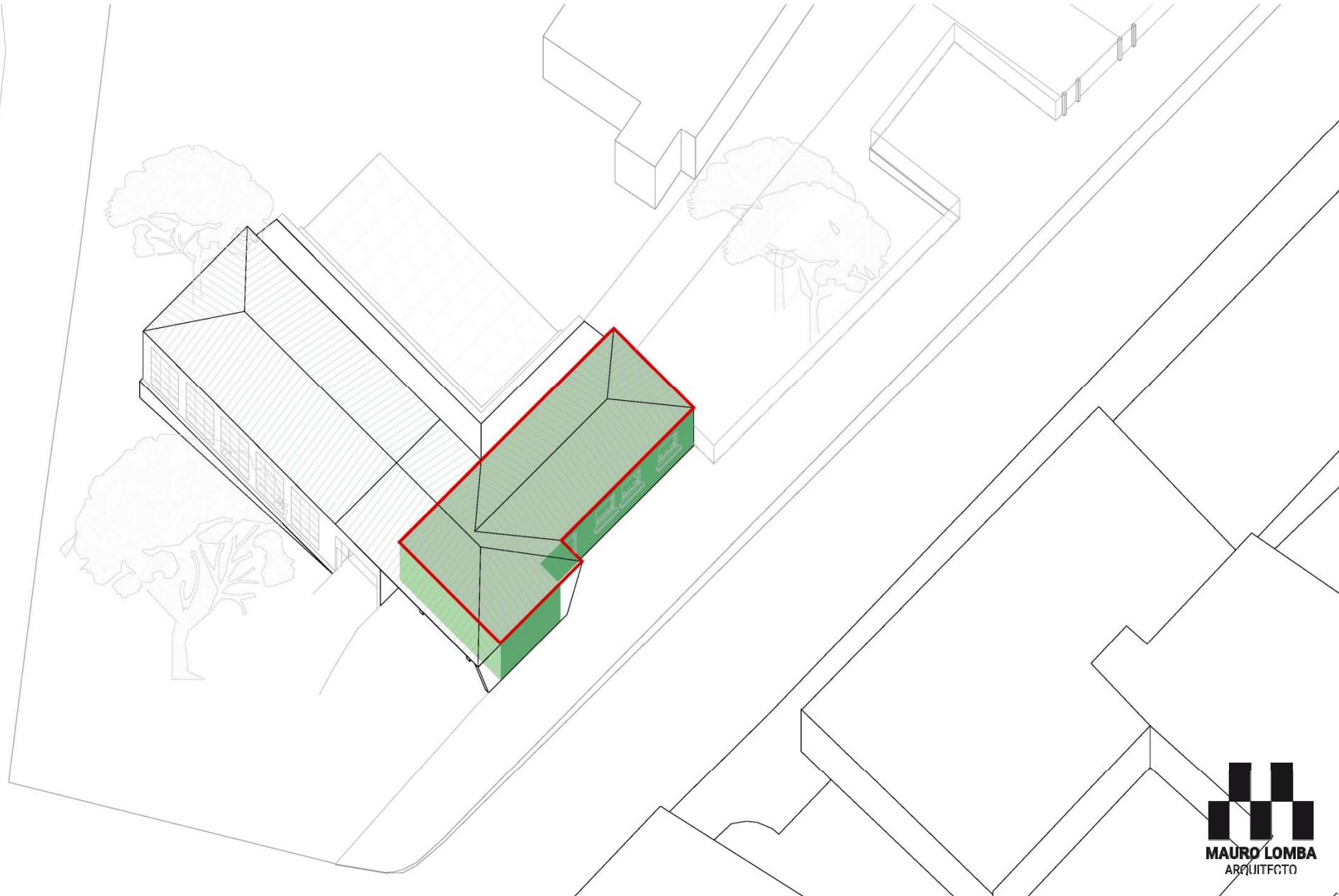
CONCELLO DE
PONTEVEDRA





CONCELLO DE
PONTEVEDRA

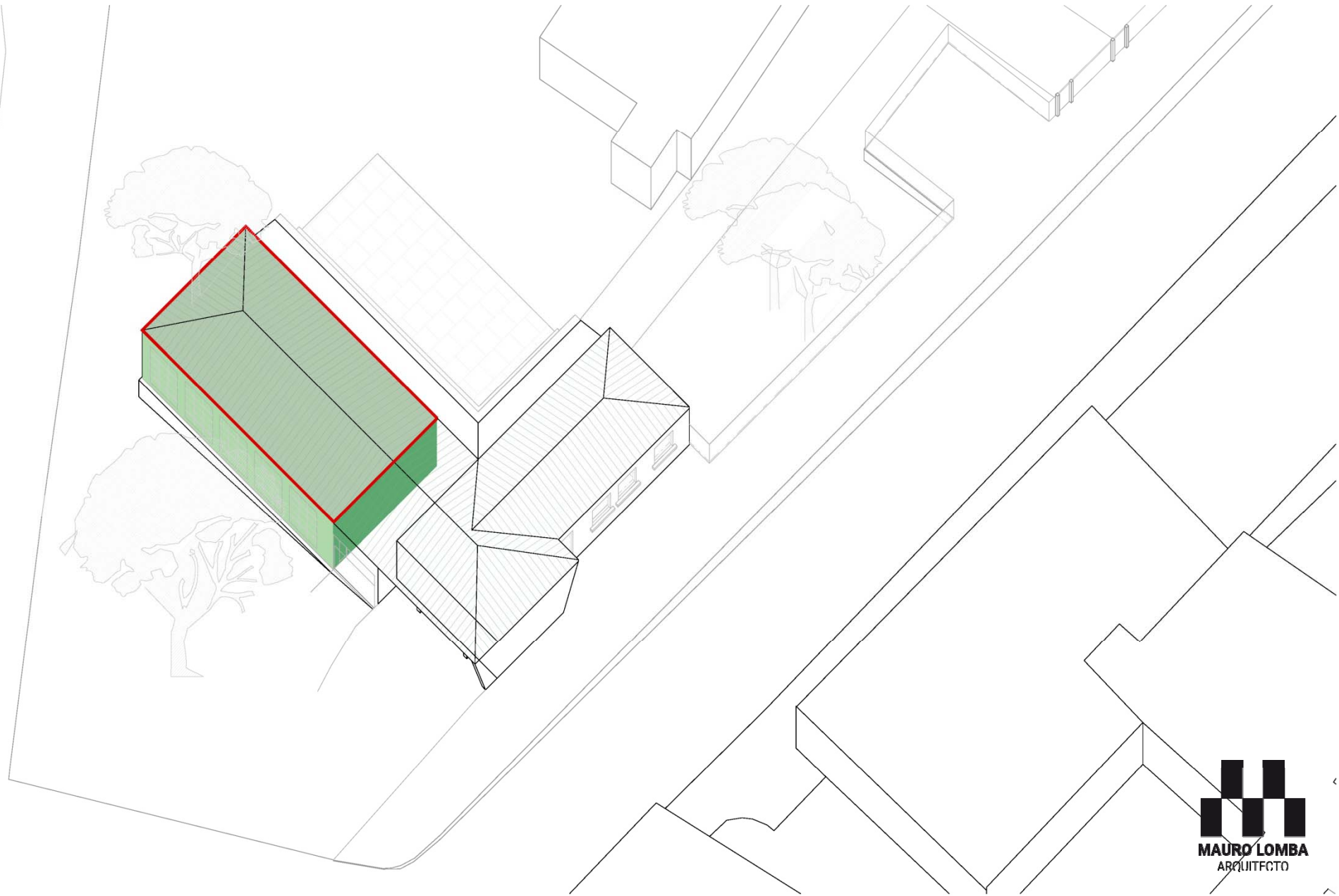




CONCELLO DE
PONTEVEDRA

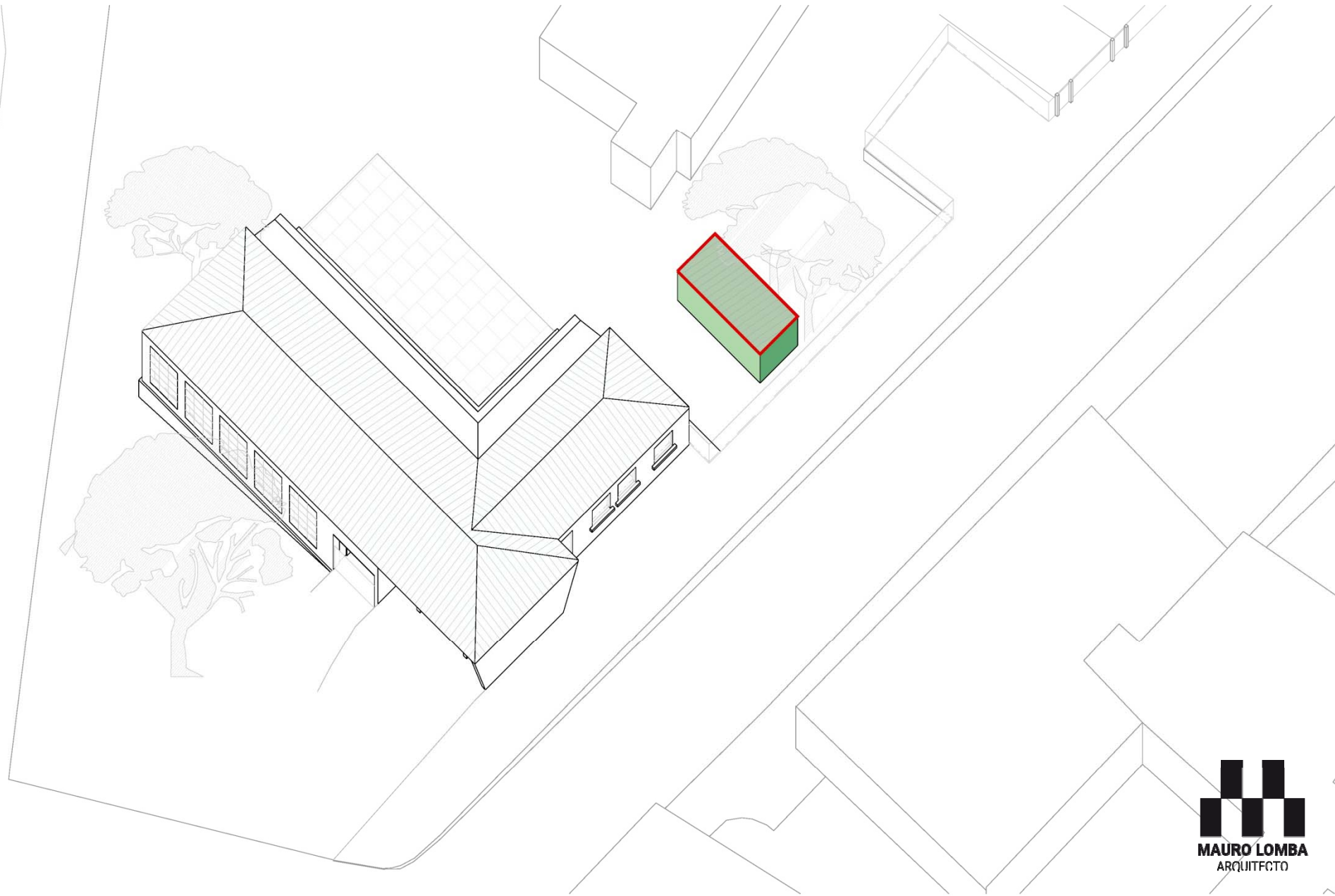


MAURO LOMBA
ARQUITECTO



CONCELLO DE
PONTEVEDRA

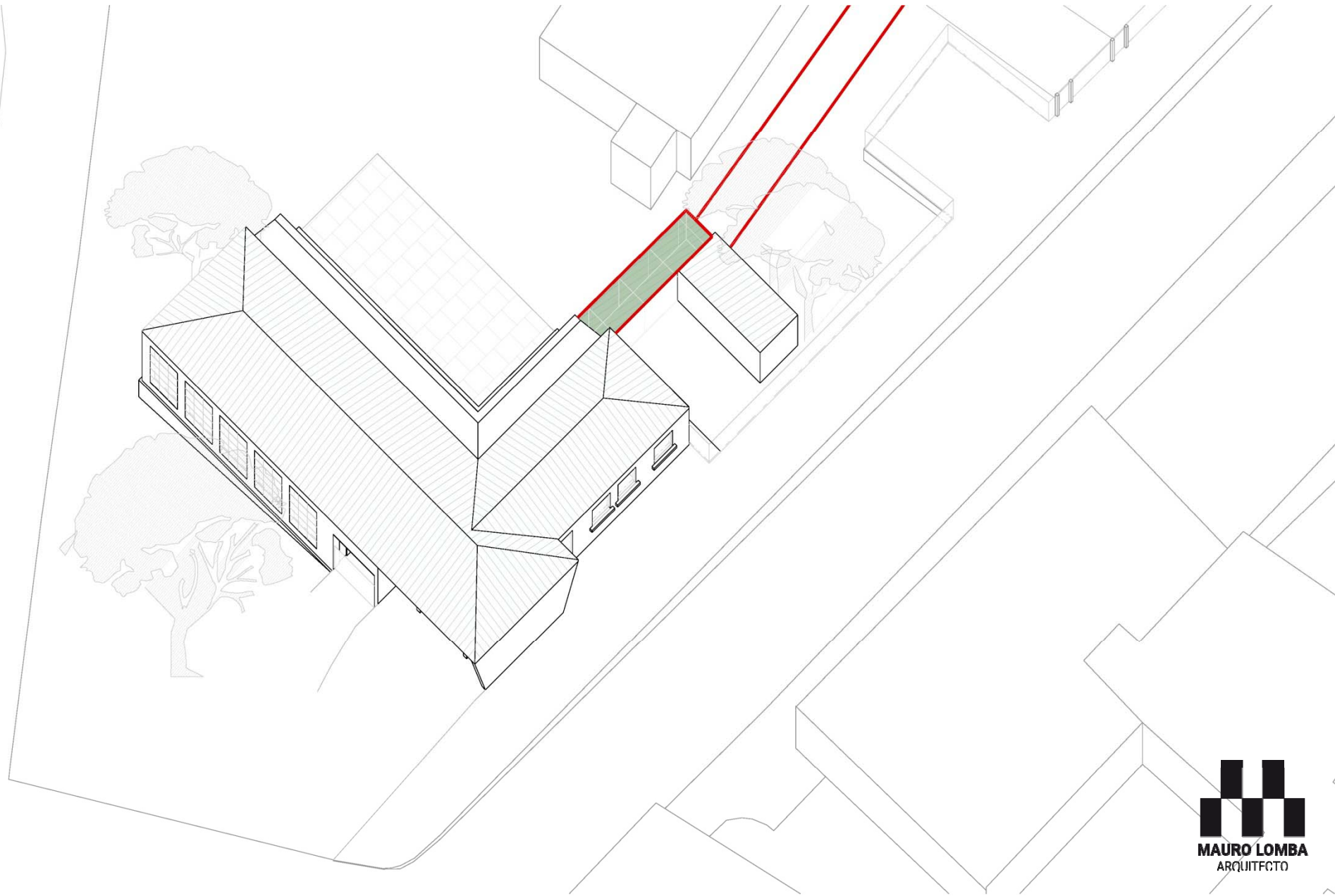




CONCELLO DE
PONTEVEDRA



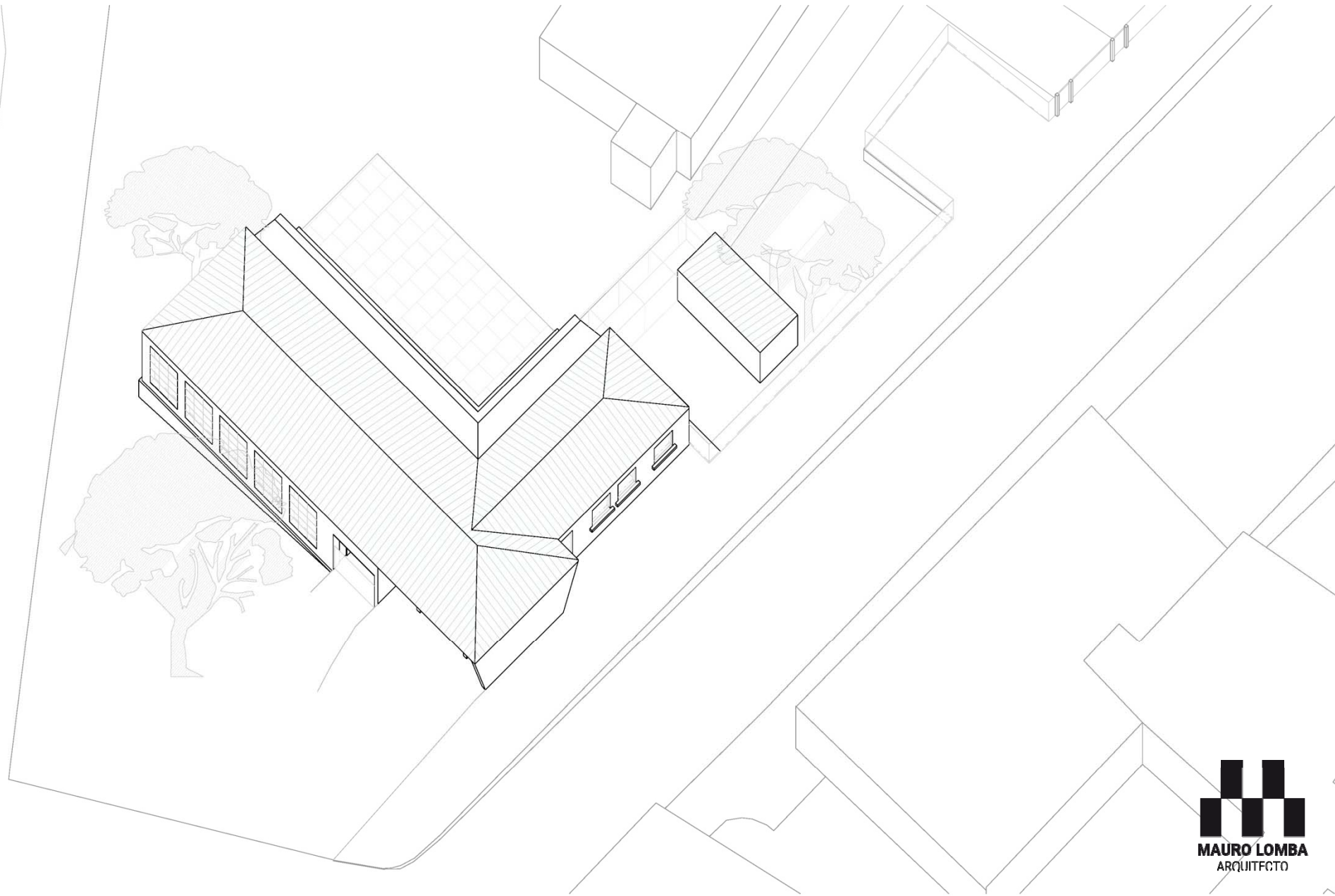
MAURO LOMBA
ARQUITECTO



CONCELLO DE
PONTEVEDRA



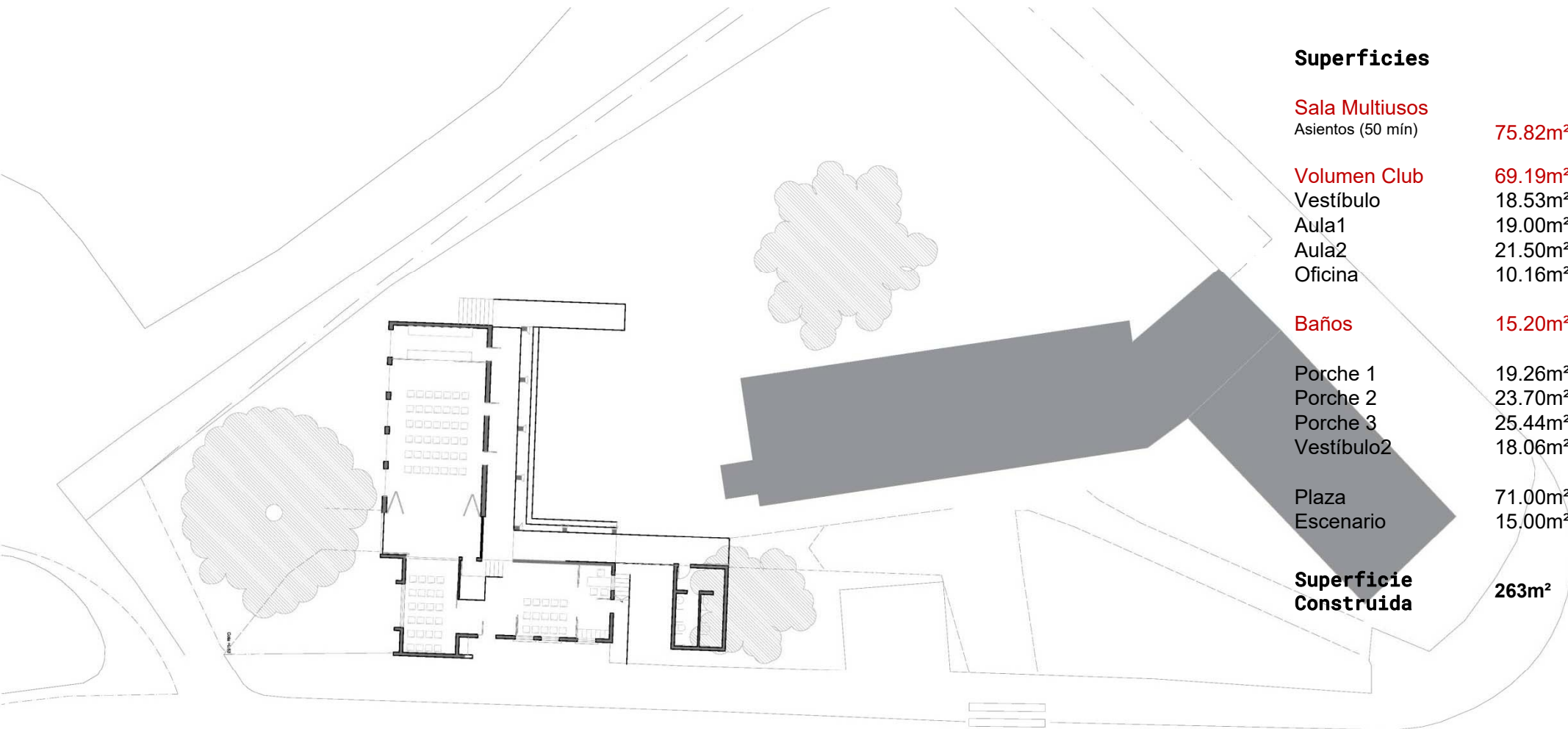
MAURO LOMBA
ARQUITECTO



CONCELLO DE
PONTEVEDRA



MAURO LOMBA
ARQUITECTO



Superficies

Sala Multiusos

Asientos (50 mín) **75.82m²**

Volumen Club

Vestíbulo **18.53m²**

Aula1 **19.00m²**

Aula2 **21.50m²**

Oficina **10.16m²**

Baños

15.20m²

Porche 1 **19.26m²**

Porche 2 **23.70m²**

Porche 3 **25.44m²**

Vestíbulo2 **18.06m²**

Plaza **71.00m²**

Escenario **15.00m²**

Superficie Construida

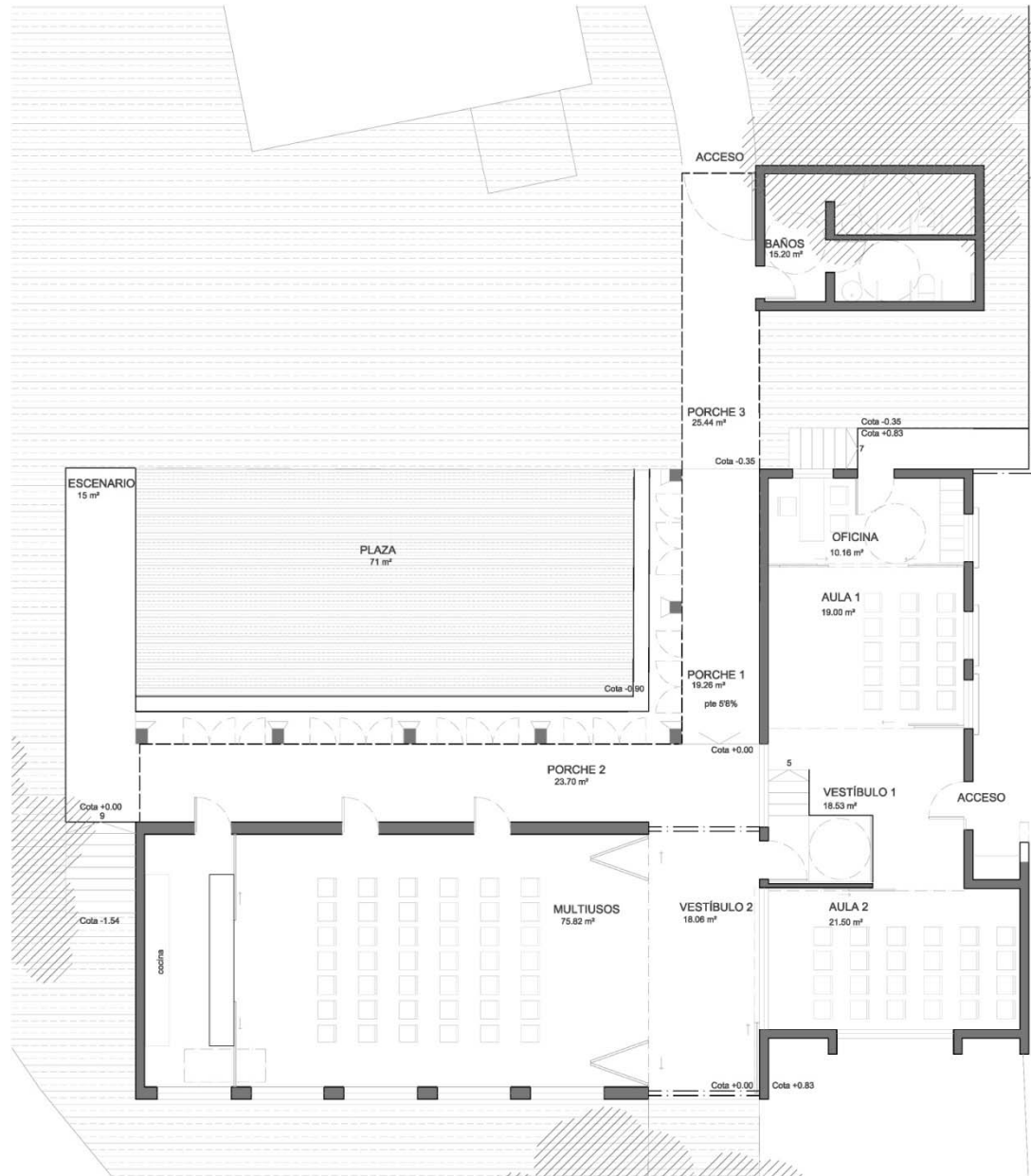
263m²



CONCELLO DE
PONTEVEDRA



MAURO LOMBA
ARQUITECTO



Superficies

Sala Multiusos

Asientos (50 mín) **75.82m²**

Volumen Club

Vestíbulo **18.53m²**

Aula1 **19.00m²**

Aula2 **21.50m²**

Oficina **10.16m²**

Baños

15.20m²

Porche 1 **19.26m²**

Porche 2 **23.70m²**

Porche 3 **25.44m²**

Vestíbulo2 **18.06m²**

Plaza **71.00m²**

Escenario **15.00m²**

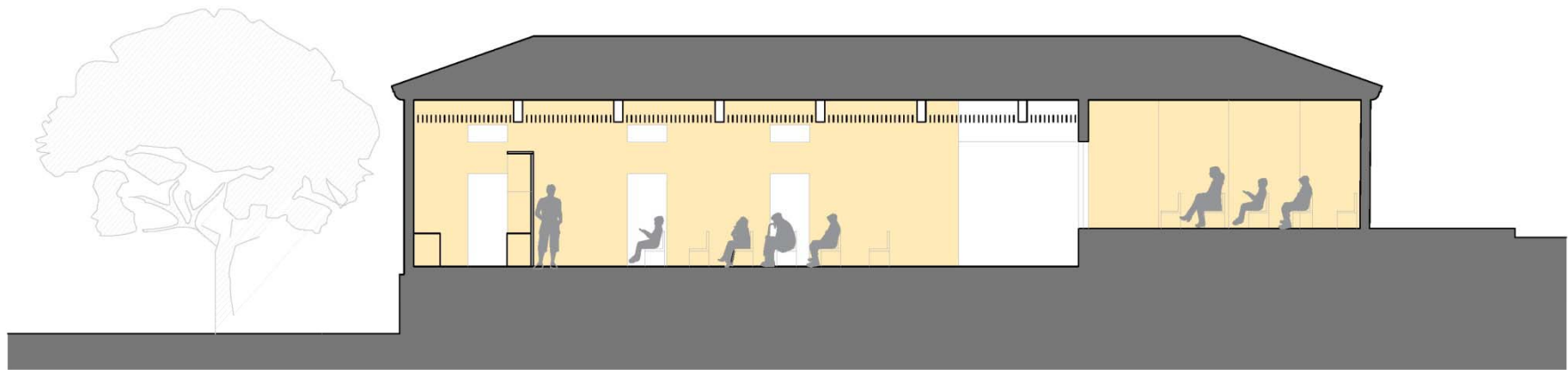
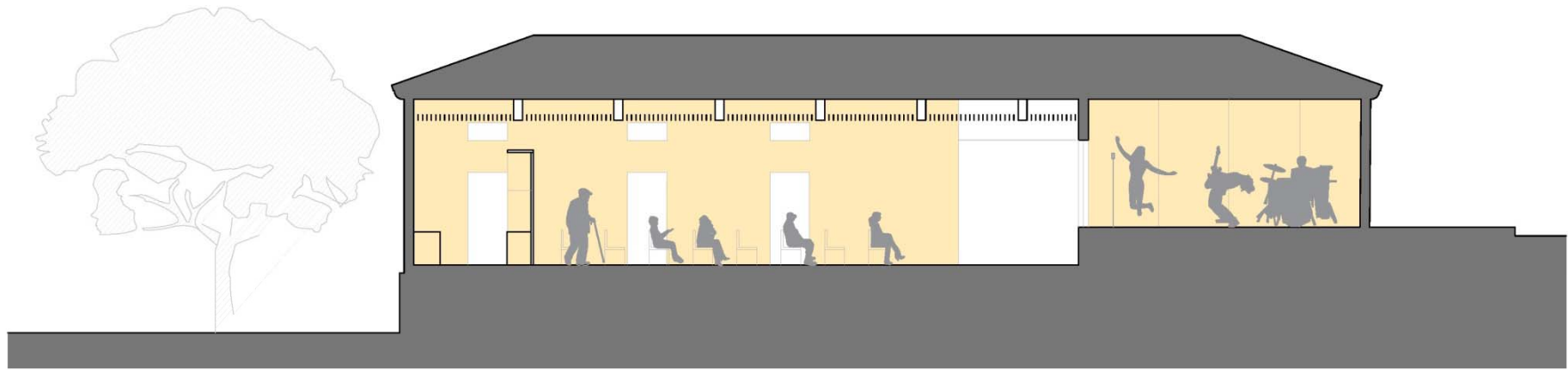
Superficie Construida

263m²



CONCELLO DE
PONTEVEDRA

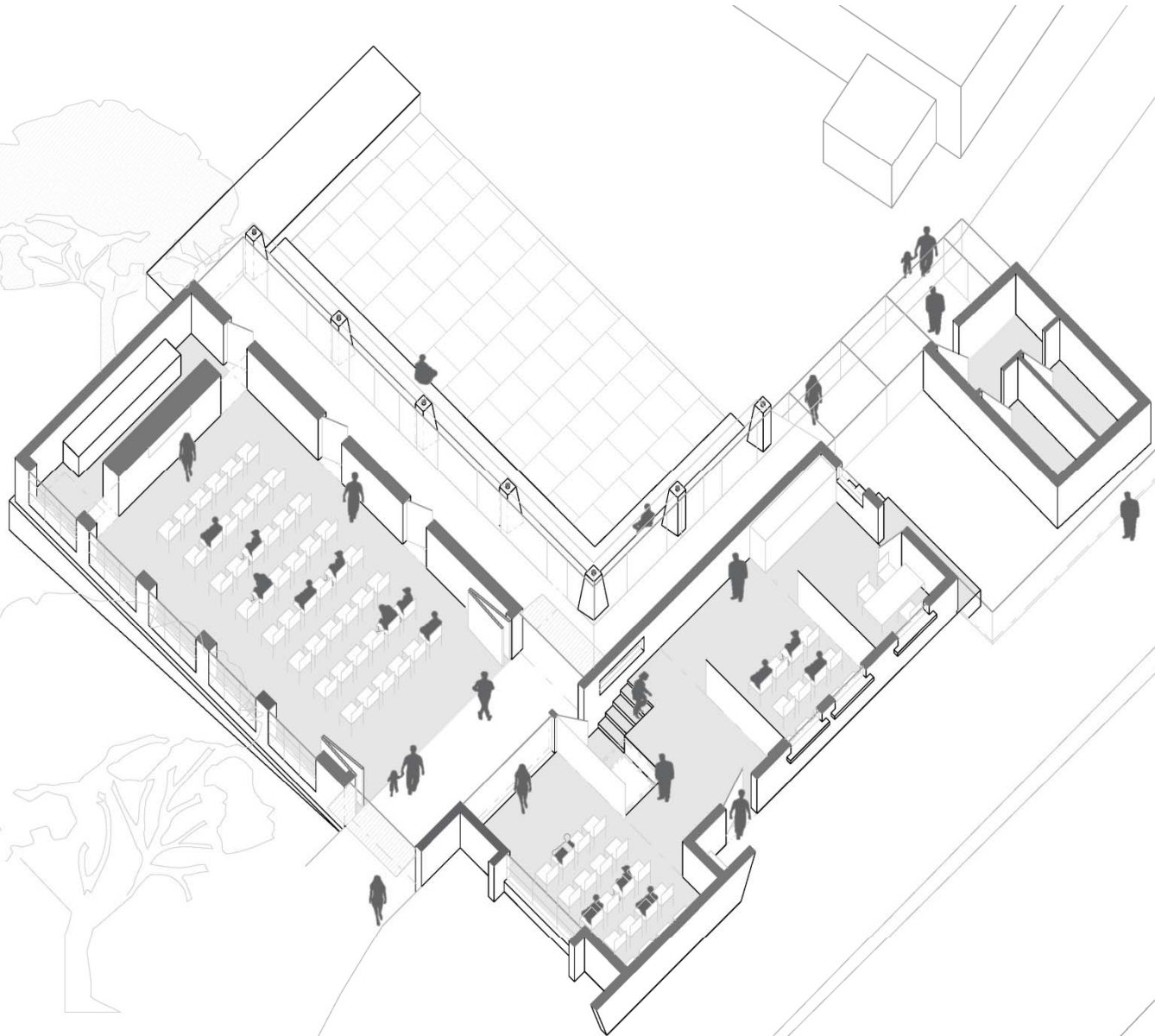




CONCELLO DE
PONTEVEDRA



MAURO LOMBA
ARQUITECTO



Superficies

Sala Multiusos

Asientos (50 min)

75.82m²

Volumen Club

Vestíbulo

69.19m²

Aula1

18.53m²

Aula2

19.00m²

Oficina

21.50m²

10.16m²

Baños

15.20m²

Porche 1

19.26m²

Porche 2

23.70m²

Porche 3

25.44m²

Vestíbulo2

18.06m²

Plaza

71.00m²

Escenario

15.00m²

Superficie Construida

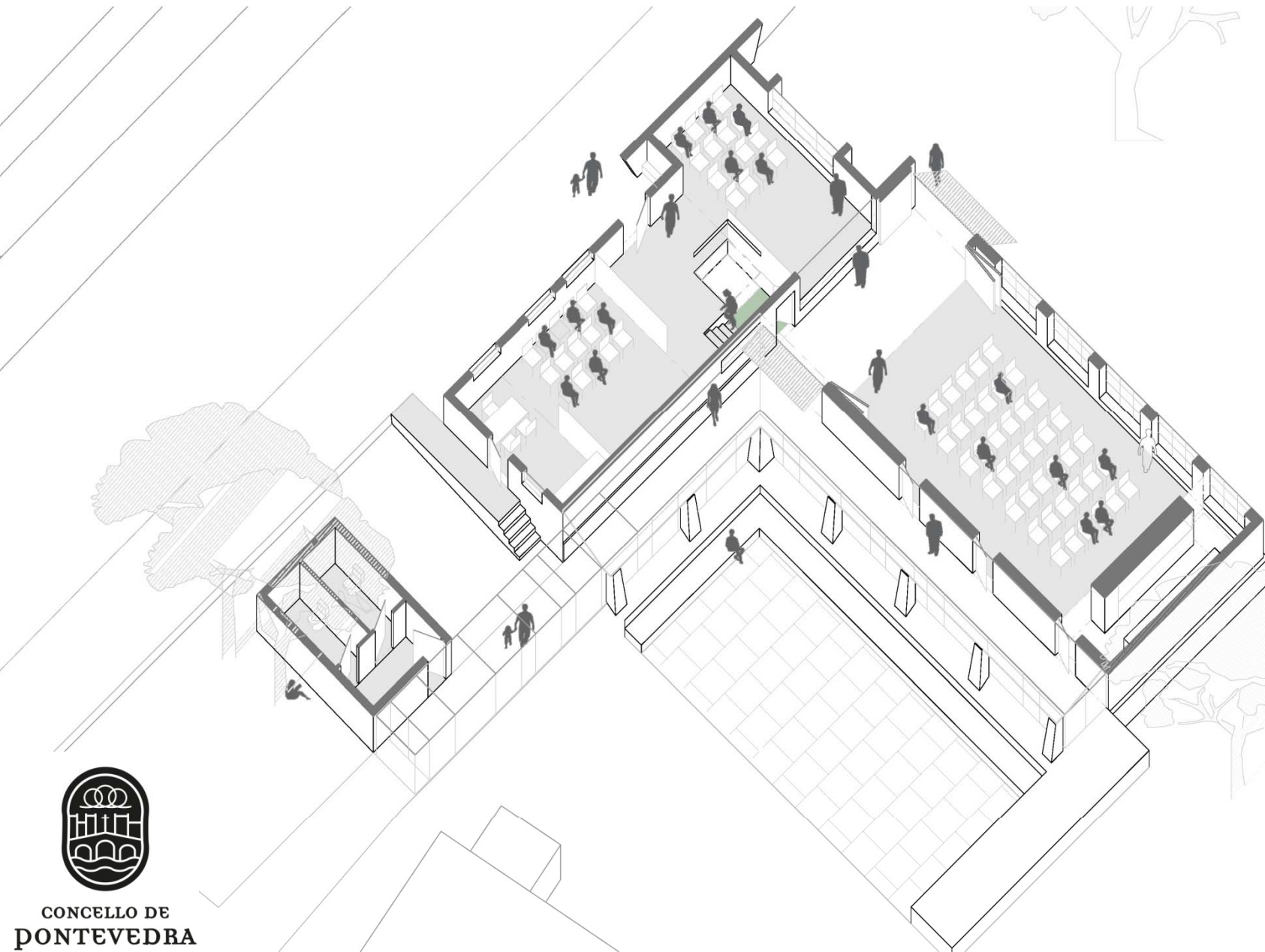
263m²



CONCELLO DE
PONTEVEDRA



MAURO LOMBA
ARQUITECTO



Superficies

Sala Multiusos

Asientos (50 mín) **75.82m²**

Volumen Club

Vestíbulo **69.19m²**

Aula1 **18.53m²**

Aula2 **19.00m²**

Oficina **21.50m²**

10.16m²

Baños

15.20m²

Porche 1 **19.26m²**

Porche 2 **23.70m²**

Porche 3 **25.44m²**

Vestíbulo2 **18.06m²**

Plaza **71.00m²**

Escenario **15.00m²**

Superficie Construida

263m²



CONCELLO DE
PONTEVEDRA





CONCELLO DE
PONTEVEDRA



MAURO LOMBA
ARQUITECTO



CONCELLO DE
PONTEVEDRA



MAURO LOMBA
ARQUITECTO



CONCELLO DE
PONTEVEDRA



MAURO LOMBA
ARQUITECTO



Centro Social Os Campos



CONCELLO DE
PONTEVEDRA



MAURO LOMBA
ARQUITECTO